

MINI 6 CHANNEL MULTI-FORMAT VIDEO SWITCHER

Model NO.: **VSO601**

- ▶ 6 channel inputs: 4×SDI and 2×HDMI inputs
- ▶ 2×SDI & 1×HDMI PGM outputs, 1×SDI AUX output, 1×SDI & 1×HDMI multiview outputs
- ▶ T-Bar/ AUTO/ CUT transitions and MIX/ FADE/ WIPE effects
- ▶ PiP mode, both size and position is adjustable
- ▶ Audio mixer: 3.5mm stereo/ RCA audio & SDI/ HDMI embedded audio
- ▶ GPIO interface for live tally system
- ▶ FTB for emergency situation



1080P/FHD 1920×1080
720P/HD 1280×720

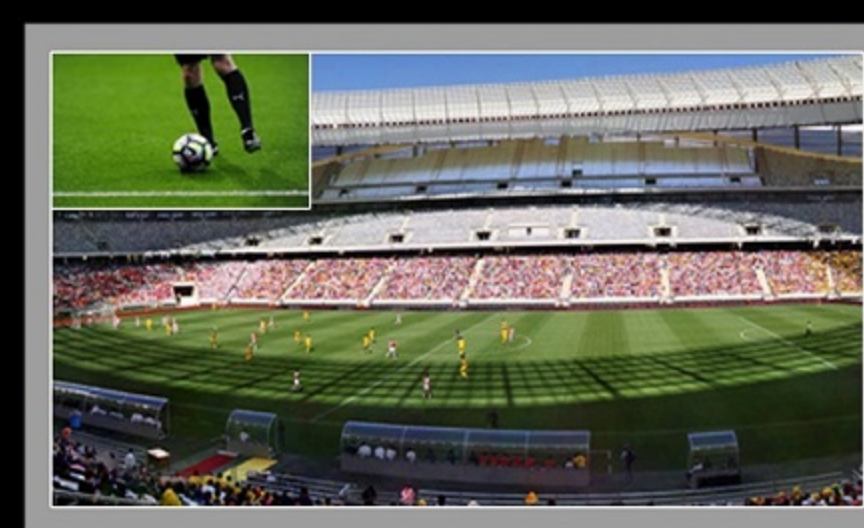
Multi-format & Scaler

Flexible to accept 6 input sources with different format and frame rate, with build-in scaler, PGM output can be scaled to 1080i and 1080p.



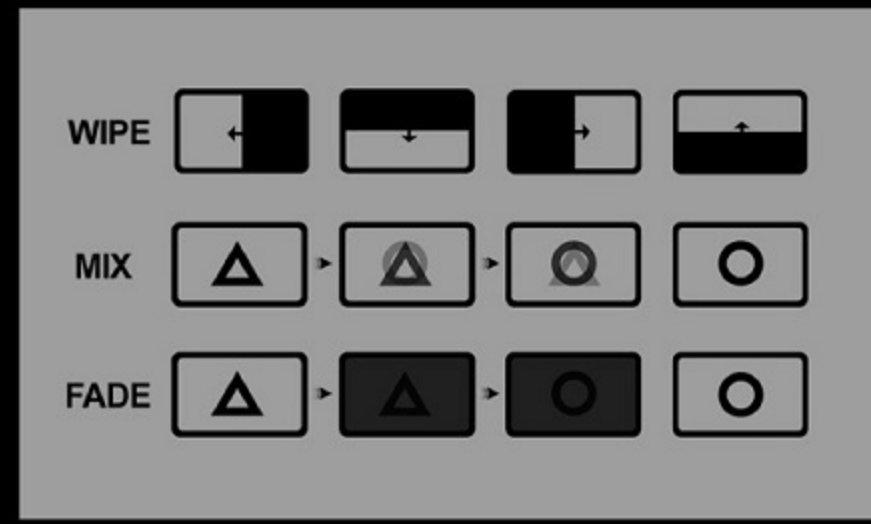
Multiview Monitoring

Multiview output make it easy to monitor 6 channels sources as well as PVW and PGM simultaneously on one display, besides, a clock and menu list are located in the lower right corner of the multiview.



PiP

To insert a second picture into/outside the main picture. Simply adjust its size and position, then apply to program.



Transition Effects

Transition between PVW and PGM with WIPE / MIX / FADE effect through T-Bar & AUTO.



Audio Mixer

A built-in audio mixer can mix 2 external stereo 3.5mm stereo & RCA audio and 6 channels of embedded audio.



Portable Handbag

A total of 1.7kg including packing accessories, with a handbag, it is very portable and suitable for various applications.



Super Compact Design

Outstanding metal case architectonics, with only 1kg weight. Convenient and suitable for the application of various occasions. 4×SDI and 2×HDMI inputs, 2×SDI & 1×HDMI PGM outputs, 1×SDI AUX output for PVW & PGM, 1×SDI & 1×HDMI multiview output.

Widespread Application

The all-in-one 6 channel video switcher can be widely used in various field events, such as live sports, virtual studio, education, church, internet, concert, and so on.



FUNCTIONS

- Transitions: Manual T-bar/ AUTO/ CUT
- Functions: Wipe/ Mix/ Fade/ FTB
- Layouts: PiP/ Multiview
- Audio Mixer: Following/ Mixing

INPUTS

- Video Inputs: SD/HD/3G-SDI(75Ω)×4, HDMI type-A(100Ω)×2
- Analog Audio Inputs: 3.5mm stereo audio ×1, RCA(L/R)×1

OUTPUTS

- PGM Outputs: SD/HD/3G-SDI(75Ω)×2, HDMI type-A(100Ω)×1
- AUX Output: SD/HD/3G-SDI(75Ω)×1
- Multiview Outputs: SD/HD/3G-SDI(75Ω)×1, HDMI type-A(100Ω)×1
- Analog Audio Output: 3.5mm stereo audio ×1, RCA(L/R)×1

DATA INTERFACE

- LAN: RJ45×1, Synchronize local time
- Tally: DB-15×1

STANDARDS

- SDI Input Format Support: 1080p 60/59.94/50/30/29.97/25/24/23.98, 1080psF 30/29.97/25/24/23.98, 1080i 60/59.94/50, 720p 60/59.94/50/30/29.97/25/24/23.98, 625i 50 PAL, 525i 59.94 NTSC
- HDMI Input Format Support: 1080p 60/59.94/50/30/29.97/25/24/23.98/23.976, 1080i 50/59.94/60, 720p 60/59.94/50/30/29.97/25/24/23.98, 576i 50, 576p 50
- PGM Output Format: 1080p 60/50/30/25/24, 1080i 60/50
- Multiview Output Format: 1080p 60
- SDI Compliance: SMPTE 292M/ SMPTE 259M/ SMPTE 424M

SIZE

- Dimension(LWD): 249.2 × 172.3 × 55mm
- Weight: 1 kg
- Working Temp: -20~60°C
- Storage Temp: -30~70°C

POWER

- Current: DC 12V, 1.2A
- Voltage: DC 6~17V
- Power Supply: DC 12V, 2A

